



## 2014 Annual Demographic Profile Johnson County, Texas

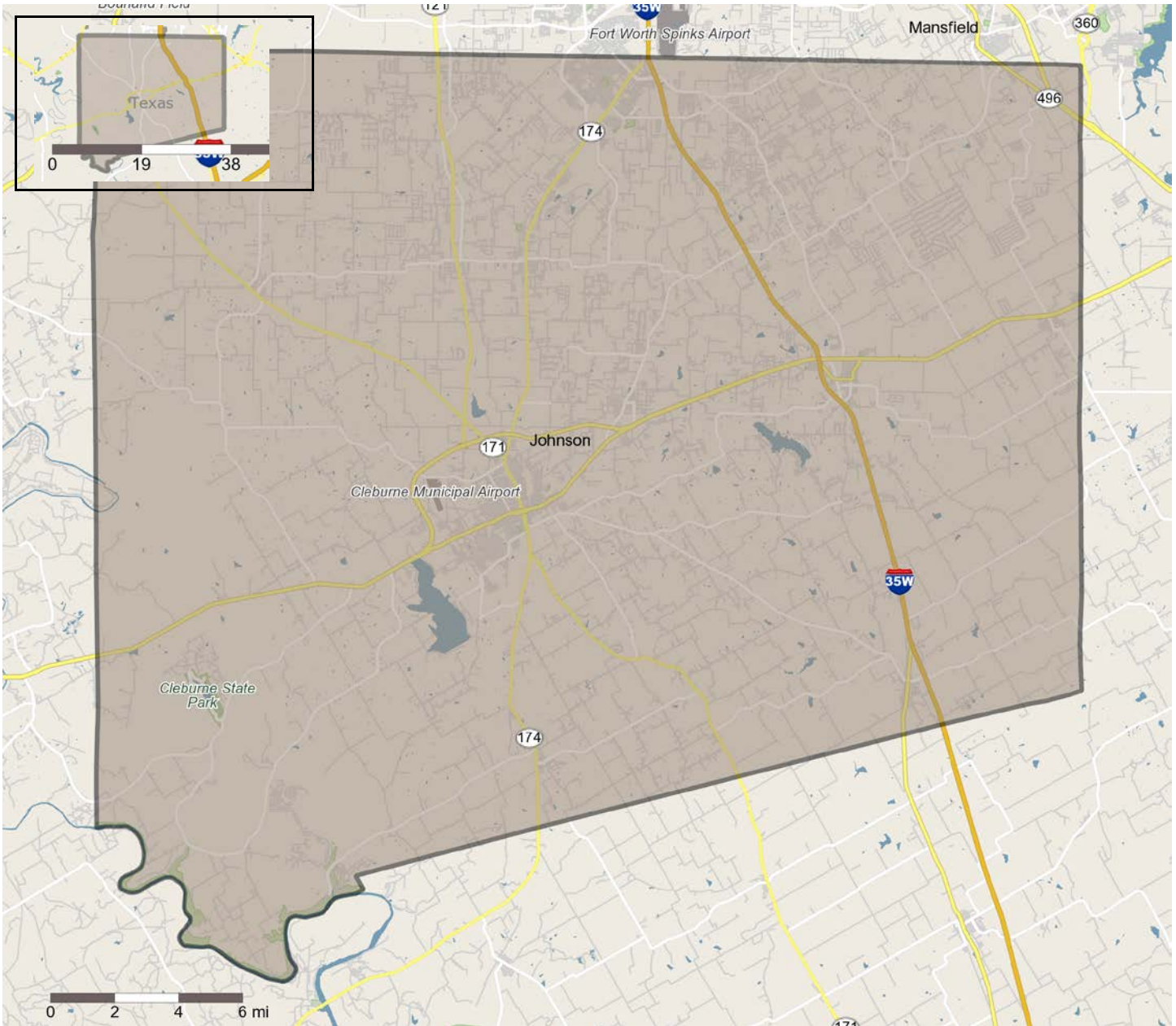
Workforce Solutions for North Central Texas is committed to preparing the workforce of tomorrow. Through our partnerships with business, education, and other community organizations, we are dedicated to leading the way in strengthening our local economy as well as to develop a quality workforce.

With 11 workforce centers and our Mobile Workforce Unit to serve you, as well as on-line assistance, we can find the right solution for you.

**[dfwjobs.com](http://dfwjobs.com)**

Equal Opportunity Employer/Program. Auxiliary aids and services are available upon request to individuals with disabilities.

Overview map showing the requested area(s):  
County; Johnson



Copyright 2006-2014 TomTom. All rights reserved. This material is proprietary and the subject of copyright protection, database right protection and other intellectual property rights owned by TomTom or its suppliers. The use of this material is subject to the terms of a license agreement. Any unauthorized copying or disclosure of this material will lead to criminal and civil liabilities.

## Complete Demographic Summary Report for County, Johnson:

### Population Demographics

	2000		2010		2014		2019		Percent Change	
	Census		Census		Estimates		Projections		2000 to 2010	2014 to 2019
Total Population	126,823		150,935		156,036		165,114		19.0%	5.8%
Population Density(Pop/Sq Mi)	172.75		216.27		212.54		224.90		25.2%	5.8%
Total Households	43,641		52,193		54,262		57,717		19.6%	6.4%

### Population by Gender:

	2000		2010		2014		2019		2000 to 2010	2014 to 2019
Male	63,278	49.9%	75,519	50.0%	78,046	50.0%	82,785	50.1%	19.3%	6.1%
Female	63,544	50.1%	75,415	50.0%	77,989	50.0%	82,328	49.9%	18.7%	5.6%

### Population by Race/Ethnicity

	2000		2010		2014		2019		Percent Change	
	Census	%	Census	%	Estimates	%	Projections	%	2000 to 2010	2014 to 2019
White	113,984	89.9%	131,623	87.2%	133,705	85.7%	139,555	84.5%	15.5%	4.4%
Black	2,850	2.3%	3,979	2.6%	4,749	3.0%	5,249	3.2%	39.6%	10.5%
American Indian or Alaska Native	856	0.7%	1,078	0.7%	1,147	0.7%	1,232	0.8%	25.9%	7.4%
Asian/Native Hawaiian/Other Pacific Islander	830	0.7%	1,475	1.0%	1,809	1.2%	2,000	1.2%	77.7%	10.6%
Some Other Race	5,963	4.7%	9,569	6.3%	10,757	6.9%	12,380	7.5%	60.5%	15.1%
Two or More Races	2,340	1.9%	3,211	2.1%	3,869	2.5%	4,698	2.9%	37.2%	21.4%
Hispanic Ethnicity	15,228	12.0%	27,319	18.1%	30,733	19.7%	35,213	21.3%	79.4%	14.6%
Not Hispanic or Latino	111,595	88.0%	123,616	81.9%	125,303	80.3%	129,901	78.7%	10.8%	3.7%

### Population by Age

	2000		2010		2014		2019		Percent Change	
	Census	%	Census	%	Estimates	%	Projections	%	2000 to 2010	2014 to 2019
0 to 4	9,303	7.3%	10,780	7.1%	10,600	6.8%	11,472	7.0%	15.9%	8.2%
5 to 14	20,665	16.3%	23,337	15.5%	23,855	15.3%	23,872	14.5%	12.9%	0.1%
15 to 19	10,420	8.2%	11,099	7.4%	11,141	7.1%	11,477	7.0%	6.5%	3.0%
20 to 24	6,974	5.5%	8,829	5.8%	9,655	6.2%	10,073	6.1%	26.6%	4.3%
25 to 34	17,035	13.4%	18,974	12.6%	19,595	12.6%	21,103	12.8%	11.4%	7.7%
35 to 44	21,728	17.1%	20,670	13.7%	20,701	13.3%	21,085	12.8%	-4.9%	1.9%
45 to 54	16,842	13.3%	22,567	15.0%	22,809	14.6%	21,546	13.0%	34.0%	-5.5%
55 to 64	11,018	8.7%	17,347	11.5%	18,494	11.9%	20,563	12.5%	57.4%	11.2%
65 to 74	7,592	6.0%	10,516	7.0%	11,747	7.5%	15,002	9.1%	38.5%	27.7%
75 to 84	4,075	3.2%	5,226	3.5%	5,695	3.6%	6,856	4.2%	28.2%	20.4%

85+	1,170	0.9%	1,589	1.1%	1,743	1.1%	2,064	1.3%	35.8%	18.4%
<b>Median Age:</b>										
Total Population	34.5		36.2		36.6		37.1			

## Households by Income

	2000		2010		2014		2019		Percent Change	
	Census	%	Census	%	Estimates	%	Projections	%	2000 to 2010	2014 to 2019
\$0 - \$15,000	5,573	12.8%	4,830	9.3%	5,097	9.4%	4,305	7.5%	-13.3%	-15.5%
\$15,000 - \$24,999	5,033	11.5%	5,012	9.6%	5,284	9.7%	4,777	8.3%	-0.4%	-9.6%
\$25,000 - \$34,999	5,758	13.2%	5,238	10.0%	5,359	9.9%	4,901	8.5%	-9.0%	-8.5%
\$35,000 - \$49,999	8,077	18.5%	7,514	14.4%	7,810	14.4%	7,263	12.6%	-7.0%	-7.0%
\$50,000 - \$74,999	10,155	23.3%	11,895	22.8%	11,958	22.0%	11,398	19.7%	17.1%	-4.7%
\$75,000 - \$99,999	5,198	11.9%	8,030	15.4%	8,298	15.3%	10,179	17.6%	54.5%	22.7%
\$100,000 - \$149,999	2,752	6.3%	6,540	12.5%	7,027	13.0%	10,025	17.4%	137.6%	42.7%
\$150,000 +	1,084	2.5%	3,134	6.0%	3,429	6.3%	4,869	8.4%	189.1%	42.0%
Average Hhld Income	\$52,870		\$71,110		\$71,109		\$81,894		34.5%	15.2%
Median Hhld Income	\$44,682		\$57,352		\$57,458		\$67,288		28.4%	17.1%
Per Capita Income	\$18,193		\$24,801		\$24,934		\$28,821		36.3%	15.6%

## Employment

	2000		2010		2014		2019		Percent Change	
	Census	%	Census	%	Estimates	%	Projections	%	2000 to 2010	2014 to 2019
Total Population 16+	94,512		114,445		119,222		127,313		21.1%	11.2%
Total Labor Force	62,420	66.0%	72,498	63.3%	77,346	64.9%	83,508	65.6%	16.1%	8.0%
Civilian, Employed	59,507	95.3%	66,574	91.8%	73,215	94.7%	80,121	95.9%	11.9%	9.4%
Civilian, Unemployed	2,854	4.6%	5,860	8.1%	4,058	5.3%	3,316	4.0%	105.3%	-18.3%
In Armed Forces	59	0.1%	64	0.1%	73	0.1%	71	0.1%	8.5%	-2.7%
Not In Labor Force	32,091	34.0%	41,946	36.7%	41,875	35.1%	43,804	34.4%	30.7%	4.6%
% Blue Collar	26,568	44.7%	30,126	45.3%	33,123	45.2%	36,072	49.3%	13.4%	8.9%
% White Collar	32,867	55.3%	36,448	54.7%	40,092	54.8%	44,049	60.2%	10.9%	9.9%

## Housing Units

	2000		2010		2014		2019		Percent Change	
	Census	%	Census	%	Estimates	%	Projections	%	2000 to 2010	2014 to 2019
Total Housing Units	46,275		56,719		59,308		63,316		22.6%	6.8%
Total Occupied Housing Units	n/a	n/a	52,193	92.0%	54,262	91.5%	57,717	91.2%	n/a	6.4%
Owner	n/a	n/a	26,592	50.9%	26,751	49.3%	28,599	49.6%	n/a	6.9%

Occupied: Owned with a mortgage or loan										
Owner	n/a	n/a	13,106	25.1%	14,258	26.3%	15,125	26.2%	n/a	6.1%
Occupied: Owned free and clear										
Renter Occupied	n/a	n/a	12,495	23.9%	13,253	24.4%	13,993	24.2%	n/a	5.6%
Vacant	2,634	5.7%	4,526	8.0%	5,046	8.5%	5,599	8.8%	71.8%	11.0%

## Vehicles Available

	2000		2010		2014		2019		Percent Change	
	Census	%	Census	%	Estimates	%	Projections	%	2000 to 2010	2014 to 2019
0 Vehicles Available	1,960	4.5%	1,315	2.5%	1,387	2.6%	1,468	2.5%	-32.9%	5.8%
1 Vehicle Available	11,423	26.2%	14,395	27.6%	15,092	27.8%	15,967	27.7%	26.0%	5.8%
2+ Vehicles Available	30,258	69.3%	36,483	69.9%	37,783	69.6%	40,282	69.8%	20.6%	6.6%
Average Vehicles Per Household	1.80		2.09		2.08		2.08		13.9%	0.0%

## Marital Status

	2000		2010		2014		2019		Percent Change	
	Census	%	Census	%	Estimates	%	Projections	%	2000 to 2010	2014 to 2019
Married, Spouse Present	59,588	61.5%	62,961	53.9%	65,059	53.5%	68,717	53.0%	5.7%	5.6%
Married, Spouse Absent	3,722	3.8%	6,763	5.8%	6,901	5.7%	7,566	5.8%	81.7%	9.6%
Divorced	9,566	9.9%	15,024	12.9%	14,430	11.9%	15,572	12.0%	57.1%	7.9%
Widowed	5,322	5.5%	5,606	4.8%	5,826	4.8%	6,201	4.8%	5.3%	6.4%
Never Married	18,603	19.2%	26,463	22.7%	29,364	24.2%	31,713	24.4%	42.3%	8.0%
Age 15+ Population	96,855		116,818		121,581		129,770		20.6%	6.7%

## Educational Attainment

	2000		2010		2014		2019		Percent Change	
	Census	%	Census	%	Estimates	%	Projections	%	2000 to 2010	2014 to 2019
Grade K - 8	4,496	5.7%	5,196	5.4%	5,351	5.3%	5,687	5.3%	15.6%	6.3%
Grade 9 - 11	12,513	15.8%	11,179	11.5%	11,207	11.1%	11,861	11.0%	-10.7%	5.8%
High School Graduate	26,390	33.2%	33,405	34.5%	34,193	33.9%	36,528	33.8%	26.6%	6.8%
Some College, No Degree	19,890	25.1%	24,315	25.1%	25,943	25.7%	27,993	25.9%	22.2%	7.9%
Associates Degree	4,370	5.5%	6,281	6.5%	6,896	6.8%	7,501	6.9%	43.7%	8.8%
Bachelor's Degree	7,699	9.7%	10,501	10.8%	10,960	10.9%	11,900	11.0%	36.4%	8.6%
Graduate Degree	3,237	4.1%	4,413	4.6%	4,679	4.6%	5,107	4.7%	36.3%	9.1%
No Schooling Completed	806	1.0%	1,599	1.7%	1,555	1.5%	1,642	1.5%	98.4%	5.6%

---

Age 25+ Population	79,402	96,890	100,785	108,220	22.0%	7.4%
--------------------	--------	--------	---------	---------	-------	------

## Seasonal Population by Quarter

	<b>2014</b>
	<b>Estimates</b>
Q4 2011	964
Q1 2012	863
Q2 2012	970
Q3 2012	910
Q4 2012	883
Q1 2013	781
Q2 2013	863
Q3 2013	805
Q4 2013	784

© 2010 US Census, All Rights Reserved, Alteryx, Inc.

© 2014 Experian, Inc. All Rights Reserved, Alteryx, Inc.

© 2014 Easy Analytic Software, Inc. (EASI®) All Rights Reserved, Alteryx, Inc.

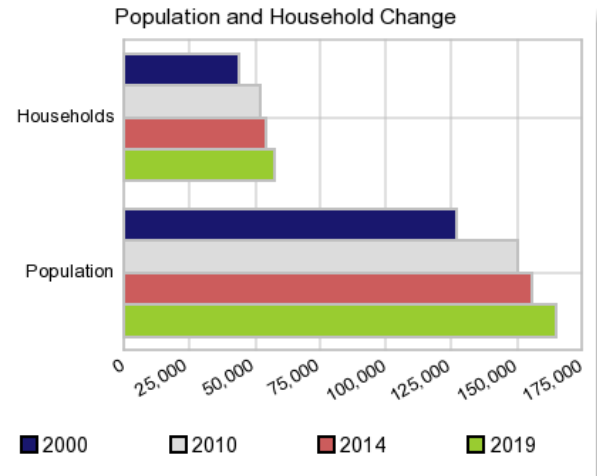
[Experian Data Methodology](#)

## Executive Summary Report with Charts for County, Johnson:

### Population Demographics:

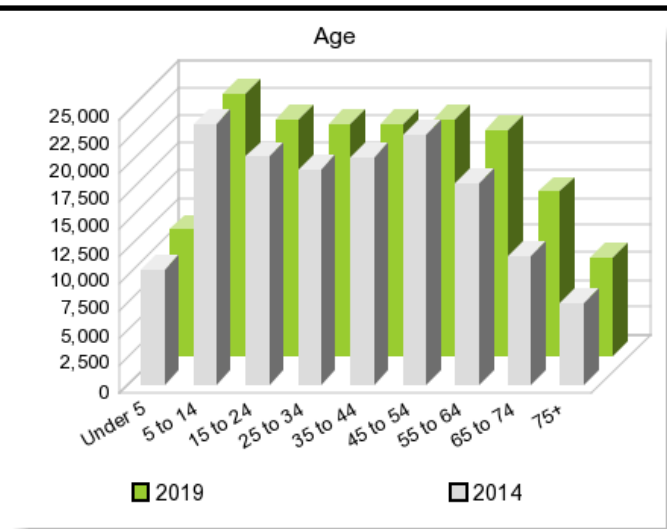
The number of households in the study area in 2000 was **43,641** and changed to **52,193** in 2010, representing a change of **19.6%**. The household count in 2014 was **54,262** and the household projection for 2019 is **57,717**, a change of **6.4%**.

The population in the study area in 2000 was **126,823** and in 2010 it was **150,935**, roughly a **19.0%** change. The population in 2014 was **156,036** and the projection for 2019 is **165,114** representing a change of **5.8%**.



	2000 Census	2010 Census	2014 Estimate	2019 Projection	Percent Change	
					2000 to 2010	2010 to 2019
Total Population	126,823	150,935	156,036	165,114	19.0%	5.8%
Total Households	43,641	52,193	54,262	57,717	19.6%	6.4%

### Population by Age



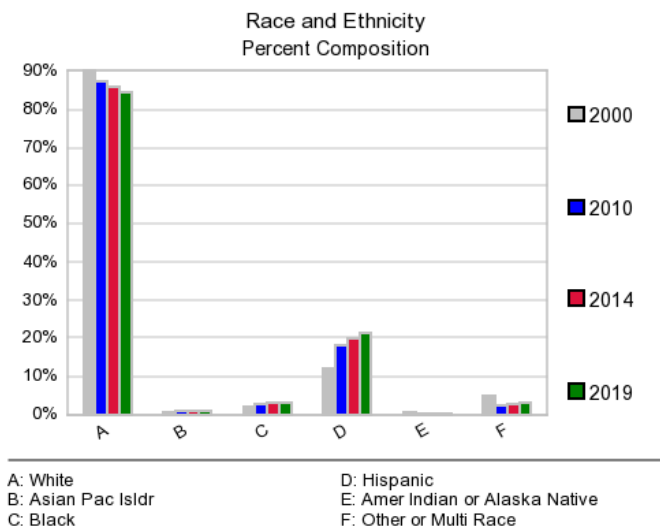
In 2000, the median age of the total population in the study area was **34.5**, and in 2010, it was **36.2**. The median age in 2014 is **36.6** and it is predicted to change in five years to **37.1** years. In 2014, females represented **50.0%** of the population with a median age of **37.6** and males represented **50.0%** of the population with a median age of **35.7** years. In 2014, the most prominent age group in this geography is **Age 5 to 14** years. The age group least represented in this geography is **Age 75 +** years.

### Age Groups

Age Groups	2000		2010		2014		2019		Percent Change	
	Census	%	Census	%	Estimate	%	Projection	%	2000 to 2010	2014 to 2019
0 to 4	9,303	7.3%	10,780	7.1%	10,600	6.8%	11,472	7.0%	15.9%	8.2%
5 to 14	20,665	16.3%	23,337	15.5%	23,855	15.3%	23,872	14.5%	12.9%	0.1%
15 to 19	10,420	8.2%	11,099	7.4%	11,141	7.1%	11,477	7.0%	6.5%	3.0%
20 to 24	6,974	5.5%	8,829	5.8%	9,655	6.2%	10,073	6.1%	26.6%	4.3%
25 to 34	17,035	13.4%	18,974	12.6%	19,595	12.6%	21,103	12.8%	11.4%	7.7%
35 to 44	21,728	17.1%	20,670	13.7%	20,701	13.3%	21,085	12.8%	-4.9%	1.9%
45 to 54	16,842	13.3%	22,567	15.0%	22,809	14.6%	21,546	13.0%	34.0%	-5.5%
55 to 64	11,018	8.7%	17,347	11.5%	18,494	11.9%	20,563	12.5%	57.4%	11.2%
65 to 74	7,592	6.0%	10,516	7.0%	11,747	7.5%	15,002	9.1%	38.5%	27.7%
75 +	5,245	4.1%	6,815	4.5%	7,438	4.8%	8,920	5.4%	29.9%	19.9%

### Population by Race/Ethnicity





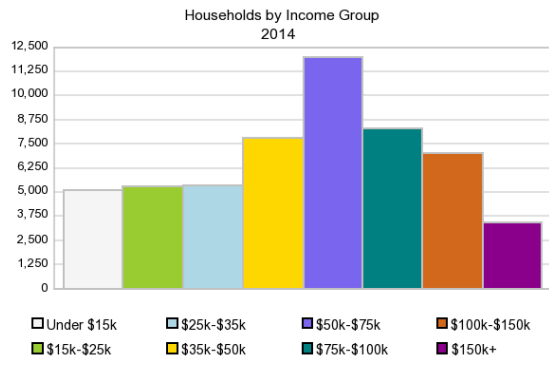
In 2014, the predominant race/ethnicity category in this study area is **White**. The race & ethnicity category least represented in this geography is **American Indian, Alaska Native**.

## Race & Ethnicity

	2000		2010		2014		2019		Percent Change	
	Census	%	Census	%	Estimate	%	Projection	%	2000 to 2010	2014 to 2019
White	113,984	89.9%	131,623	87.2%	133,705	85.7%	139,555	84.5%	15.5%	4.4%
Black	2,850	2.3%	3,979	2.6%	4,749	3.0%	5,249	3.2%	39.6%	10.5%
American Indian or Alaska Native	856	0.7%	1,078	0.7%	1,147	0.7%	1,232	0.8%	25.9%	7.4%
Asian/Hawaiian/PI	830	0.7%	1,475	1.0%	1,809	1.2%	2,000	1.2%	77.7%	10.6%
Some Other Race	5,963	4.7%	9,569	6.3%	10,757	6.9%	12,380	7.5%	60.5%	15.1%
Two or More Races	2,340	1.9%	3,211	2.1%	3,869	2.5%	4,698	2.8%	37.2%	21.4%
<i>Hispanic Ethnicity</i>	15,228	12.0%	27,319	18.1%	30,733	19.7%	35,213	21.3%	79.4%	14.6%
<i>Not Hispanic or Latino</i>	111,595	88.0%	123,616	81.9%	125,303	80.3%	129,901	78.7%	10.8%	3.7%

## Households by Income

In 2014 the predominant household Current Year income category in this study area is **\$50K - \$75K**, and the income group that is least represented in this geography is **\$150K +**.



## HH Income Categories

	2000		2010		2014		2019		Percent Change	
	Census	%	Census	%	Estimate	%	Projection	%	2000 to 2010	2014 to 2019
\$0 - \$15,000	5,573	12.8%	4,830	9.3%	5,097	9.4%	4,305	7.5%	-13.3%	-15.5%
\$15,000 - \$24,999	5,033	11.5%	5,012	9.6%	5,284	9.7%	4,777	8.3%	-0.4%	-9.6%
\$25,000 - \$34,999	5,758	13.2%	5,238	10.0%	5,359	9.9%	4,901	8.5%	-9.0%	-8.5%
\$35,000 - \$49,999	8,077	18.5%	7,514	14.4%	7,810	14.4%	7,263	12.6%	-7.0%	-7.0%
\$50,000 - \$74,999	10,155	23.3%	11,895	22.8%	11,958	22.0%	11,398	19.7%	17.1%	-4.7%
\$75,000 - \$99,999	5,198	11.9%	8,030	15.4%	8,298	15.3%	10,179	17.6%	54.5%	22.7%
\$100,000 - \$149,999	2,752	6.3%	6,540	12.5%	7,027	13.0%	10,025	17.4%	137.6%	42.7%
\$150,000 +	1,084	2.5%	3,134	6.0%	3,429	6.3%	4,869	8.4%	189.1%	42.0%
Average Hhld Income	\$52,870		\$71,110		\$71,109		\$81,894		34.5%	15.2%
Median Hhld Income	\$44,682		\$57,352		\$57,458		\$67,288		28.4%	17.1%
Per Capita Income	\$18,193		\$24,801		\$24,934		\$28,821		36.3%	15.6%

© 2010 US Census, All Rights Reserved, Alteryx, Inc.  
 © 2014 Experian, Inc. All Rights Reserved, Alteryx, Inc.  
 © 2014 Easy Analytic Software, Inc. (EASI®) All Rights Reserved, Alteryx, Inc.  
[Experian Data Methodology](#)

To help better serve you and your needs, please contact the closest Workforce Center near you.

**Collin County:**

1701 W. Eldorado Parkway,  
Ste. 250  
McKinney, TX, 75069  
(972) 542-3382  
(972) 548-8173 (fax)

1101 Resource Drive,  
Ste. 100  
Plano, TX 75074  
(469) 229-0099  
(469) 229-0088 (fax)

**Denton County:**

1300 Teasley Lane  
Denton, TX 76205  
(940) 382-6712  
(940) 323-4391 (fax)

**Ellis County:**

1712 West Hwy. 287 Bus  
Waxahachie, TX 75165  
(972) 937-8114  
(972) 937-1719 (fax)

**Erath County:**

2165 West South Loop, #1  
Stephenville, TX 76401  
(254) 965-5100,  
(254) 965-6843 (fax)

**Hood/Somervell County:**

919 East Hwy 377, Ste. 8  
Granbury, TX 76048  
(817) 573-4282  
(817) 573-1387 (fax)

**Hunt County:**

2500 Stonewall, Suite 201  
Greenville, TX 75401  
(903) 454-9350  
(903) 454-9855 (fax)

**Johnson County:**

202 Hyde Park,  
Ste. 200  
Cleburne, TX 76033  
(817) 641-6201  
(817) 641-7057 (fax)

**Kaufman County:**

109 Tejas Drive, Ste. 300  
Terrell, TX 75160  
(972) 563-7271  
(972) 563-7274 (fax)

**Navarro County:**

720 N. Beaton Street  
Corsicana, TX 75110  
(903) 874-8276  
(903) 872-7804 (fax)

**Parker County:**

126 College Park Drive  
Weatherford, TX 76086  
(817) 594-0049  
(817) 594-0329 (fax)

North Central Texas  
WorkForce Board  
600 Six Flags Drive  
P.O. Box 5888,  
Arlington, TX 76005-5888

[dfwjobs.com](http://dfwjobs.com)

